

# West Ilsley News

[www.westilsley.org](http://www.westilsley.org)

August 2011

## EDITORS

Andrea Cook  
Clock Cottage  
☎ 281224

Liz Dray  
The Malthouse  
☎ 281688

[westilsleynews@msn.com](mailto:westilsleynews@msn.com)    [lizdray@btinternet.com](mailto:lizdray@btinternet.com)

Deadline for the next publication is:

5pm on Wednesday 24<sup>th</sup> August

## DIARY SEPTEMBER

12<sup>th</sup> Parish Council Meeting

## WEST ILSLEY MIXED DOUBLES TENNIS TOURNAMENT

Bank Holiday Monday 29<sup>th</sup> August, 2011.  
Start time 2pm.

We would like to invite you to take part in a mixed doubles tournament to be held in West Ilsley. We shall use 2 courts - the village court and special thanks to the Hanbury's for the use of their court.

The format of this *informal* tournament is as follows: We hope that at least 8 couples will take part with 4 couples on each court. They will play all other couples in their group and the group winners will be the couple with the most games. The final between the two group winners will take place on the village court in the late afternoon.

Each match will be 7 (or 9 games depending on timing and number of couples) with the 2<sup>nd</sup> deuce being sudden death. If we have enough interest we will start with a group stage played in the morning (10am) and one in the afternoon (2pm). In this case the semi finals and final will be played in the early evening.

We very much hope that you will take part. £10 to enter per person and a chance to be crowned champions!

The tournament will be followed by refreshments for all. All profits will go to the West Ilsley tennis court management committee.

If you have any queries or wish to enter please contact Alison Banks on 281705 or [Alison@poplars.org.uk](mailto:Alison@poplars.org.uk)

**Open to all members of West Ilsley Tennis Club. Please reply as soon as possible and no**

**later than Saturday 20th August, to Alison by mail or drop the details at the end of this WIN to her.**

## EVERGREENS

On Thursday 18<sup>th</sup> August there will be a coach outing to Swanage, leaving from outside West Ilsley church at 9 am. Members £10, non-members £12.50. Names to Julia Rockall 281597.

## PRESCRIPTION SERVICE

Just to remind villagers that we have a service operated by Liz Elliott from 2 Morland Close – prescriptions can be dropped into the box in the porch at any time or through the letterbox if the porch is closed. For collection, please note the hours are between 10 am and 6 pm Monday to Friday. If you cannot make these times, please telephone 281997 to see if another time is convenient. Prescriptions are collected and delivered by the surgery bus on Tuesdays and Fridays at around 9.30 am.

## RUSS BROWN - IN MEMORIAM

I feel most remiss that I failed to meet the editorial deadline last month and hadn't written anything in praise of Russ Brown, one of the most marvellous men to have crossed my lifetime of paths. I first met Russ and Irene when my children were small. They were new to the village and somehow ended up babysitting and ironing - often, but not always at the same time! Our children couldn't wait for us to go out so that they could be on their own with this very special team. The duo and the legend was Mr. and Mrs. Brown. They regularly visited to dispense stories, rhymes and anecdotes and to play games with my wee family. Above all, they loved Russ' yarns and sense of humour - they loved it. Irene has that very special compassionate quality that made theirs a very special marriage, and even sadder that Russ was taken from her relatively young in years and youthful in attitude. He was a great family man, as his son, daughter and grandchildren will testify. He was so much-loved by all who knew him: he enriched so many of our lives, particularly in the

Harrow over a pint. There is a big hole where he once was: I shall miss him enormously. My thoughts are with Irene and her family. Polly Muir.

**FOR SALE**

Mahogany chest of drawers  
109 cm wide by 50 cm deep by 107 cm tall  
Very good condition  
£75, can deliver locally  
Please ring 281997

**RUSS BROWN**

**11.9.1940 - 06.06.2011**

A total of £608.40 was raised for Thames Valley and Chiltern Air Ambulance Trust. My sincere thanks to all our friends who donated.

Russ would have been very pleased to see it go to such a worthwhile cause.

Irene Brown

**ANDY DRIVER**

My thoughts are also with Andy's family at this very sad time - to have a son and brother taken from you so young is significant. Andy shared a birthday with Anna Wond and me, but was some years younger than both of us, and that makes this loss all the more poignant. Andy was a regular visitor at The Harrow and as all who knew him would confirm, always displayed a very keen and dry sense of humour that he liked to share. Somehow, when delivering his lines, he managed to keep a deadpan face, which cracked me up and was always very provocative and intelligent in his conversation. As chair of the takeover tennis committee, he was instrumental and the big motivator in getting the refurbishment of the tennis court underway. I kept him up to date with all the work, so he was aware of the achievements made following his catalyst injections at the beginning of the project. I would like to think that he is in a happier place, but I am the sadder for his absence. Polly Muir

**PRE-FETE FRIDAY & FETE SUNDAY**

The village worked hard for this fundraiser and I do hope that the great community effort towards The West Ilsley Show will have paid off. Under a theatre of light and sound which had taken Doug Brown days to construct, we started the weekend with the very successful Friday evening event, master-minded by Hugh and Sue on the Friday evening. We were treated to a splendid evening of food, drink and entertainment - great! The chefs and cooks created culinary success to satisfy the palate, whilst the accompanying wine/beer soothed the soul and the music satiated the mind (or was that the other way round?). Everyone

loved it. Hopefully lots of money raised for East Ilsley School with the raffle and a grand time had by all who thronged therein. Some say (to quote that master of Top Gear)...there had not been a more entertaining Fete. First up, the weather was a corker - luck or what? - but the entertainment factor this year seemed more enjoyable than ever. The barbie, the teas, the tennis, the dogs, the races, the stalls... the bargains to be had on Barbara and Avice's legendary vintage stall. Talking of Top Gear - towards the end of the afternoon, my sedate husband was last seen hanging around at my side, with an armful of bargains....an armful of top gear/clothes. Avice was indiscreet enough to mention that she had never seen a man so well-behaved whilst he was shopping. Oh Dear Alan! That is something to live up to (or live down?). And to which Alan do I refer?

Anyway, congratulations to the fete team -Alan, Doug, Hayley, Terri and Jo. Thank you, and your large army of volunteers, for a great day - it was a tremendous amount of hard work. I do hope that everybody appreciates it. Polly Muir

**SMOKE**

**Sean Ryan, Chairman, West Ilsley Parish Council**

Acrid smoke from a fire in the West Ilsley Stables muck heap has prompted several complaints to the parish council, so this is a quick note to explain what's happening. According to the Stables, the fire broke out without any warning at lunchtime on Thursday July 21. It isn't known how it began but the Stables assure us that they didn't set fire to the heap. The fire brigade was called and has been monitoring the situation and liaising with the Environment Agency. The fire brigade returned on Tuesday July 26 and asked for the heap to be pushed back to create a sort of firebreak around it while they damped down the surrounding area. This pushing back stirred up the fire a bit and the fire brigade has advised that it be left to burn itself out. The Stables have kept the parish council up to date with developments and apologised for the inconvenience to all in the village. If you have any concerns or comments, please email me at [sean.ryan@sunday-times.co.uk](mailto:sean.ryan@sunday-times.co.uk) or call me on 281336, or contact Alison Banks, the parish council clerk, at [alison@poblars.org.uk](mailto:alison@poblars.org.uk) Sean

## ALL SAINTS CHURCH WEST ILSLEY

Kay and Ian Fewtrell-Smith

### August Church Services in All Saints, West Ilsley

7 <sup>th</sup>	Family Communion	9.30am
14 <sup>th</sup>	Holy Communion	8.30am
21 <sup>st</sup>	Family Service	11.00am
28 <sup>th</sup>	* No service in West Ilsley	

\*Please see the lych gate notice board for details of other services in the benefice.

Also, please note that from September onwards there will be a change to the pattern of services. Our Family Service will move to the fourth Sunday of the month and on the third Sunday there will be a United Benefice service at Chieveley.

**Revdd Kate and Graham Stacey:** As many of you will know, our curates Graham and Kate Stacey took their last service in our benefice on Sunday 31st July. Kate will begin her new ministry at a service in one of her new churches on 8th September at 7.30pm. A coach will be taking anyone who would like to go from this area to the service, picking up at Chieveley village hall at 5.30pm and Beedon Hill at 5.45pm. Return expected about 11pm. Seats will be allocated on a first-come-first-served basis. Please contact Denise Brown on 01635 281825 or [denisefbrown@gmail.com](mailto:denisefbrown@gmail.com) if you would like to go.

**Congratulations** to Simon Richards and Rebecca Bubb who were married in All Saints' Church recently and to Oliver Turner whose baptism took place here in July.

**New Benefice Website:** Although still under construction, there is a new benefice website at <http://tinyurl.com/east-downland>.

## Drivers

Volunteer Handbybus drivers *urgently* required by the Downland Volunteer Group to take Downland residents on outings on weekday afternoons.

No previous experience necessary.

**Can you help?**

Contact Kate on 01488 638769

## Needed

## TENNIS NEWS

Amanda Knight is busy organising tennis coaching for the 'smallies', not-so-small juniors and the older juniors. At our last tennis meeting,

we decided that senior members should not miss out! We have coaches, ready to offer advice and help you commence or improve. If there are any new players (members or non-members) who would like coaching or any existing players who would like to improve, let either Amanda or me know. We can put you in touch with our coaches, or organise a group for tuition - you get to enjoy your tennis more and learn how to play!! Come and join us. New members are still very welcome. Please contact Liz Dray or one of the committee members for details (Liz's details are at the front of this newsletter). Polly Muir281647

## PUFFIN POST APPEAL

Thank you to all the villagers and their friends who supported my "Puffin Post Appeal" stall at this year's fete! Thanks to your generosity the stall made £75 which I have paid over to the RSPB. The money will be used to help pay for a researcher to find out why puffin numbers are declining. The research will be carried out at Bempton Cliffs, Yorkshire. Finally, thanks to all my friends who helped me on the day!

Ellen Knight

## MIDSOMER PARTY

The weather was beautiful. Everyone looked fabulous. The food was devoured. The music built the rhythm and the village danced until the small hours.

Well over one hundred people crowded into the marquee for the Midsomer Party and helped raise money for the village and local causes which will be added to the profit from the Fete before being distributed. The Ilsleys school ran the raffle on the night and raised a fantastic amount of over £400. A huge thank you to those (and you know who you are) who provided the salads on the night, for blowing balloons, laying tables, hanging bunting, washing up, and generally lending a hand. Thank you also to Alan Beaumont for sponsoring the Magnum of Champagne. The biggest thanks goes to Alan B, Doug & Mark

Fairchild for spending days in the tent before and after.. putting up and taking down equipment, for planning and for worrying.... for no other reason than their commitment to this - our village.

Sue Evans

## August Break

**Aldworth Saturday Market** will only open, from 9 a.m. to 10 a.m., for pre-ordered bread and papers on the **LAST** two Saturdays in August. Open as usual from 9 to noon all other Saturdays.

We look forward to your visits and thank you for your support. If you ever wish to place orders for fresh fruit and vegetables, cakes, flowers or papers etc. please contact Kathy **01635 578090**.

N.B. We sell FAIRTRADE groceries and also stock Dragonfly Teas at a special discounted price.

## WEST ILSLEY FETE

This year's fete was a great success and the weather even held out for us too. Thank you to everyone who helped in making it such a great day. Also thank you to everyone who came along on the day and supported us, if it wasn't for you the fete wouldn't happen. We managed to receive sponsorship from several companies and we would like to say a big thank you to them as well.

If anyone would like to join the committee for next year please contact Alan Bloor, Hayley Watling, Jo Coles or Teri Mugeridge. New ideas are also very welcome.

Vintage Clothing	£308.81
Bric-a-Brac	£80.00
Welly Wanging	£72.00
Dog Show	£56.00
Face Painting	£22.30
Raffle	£371.70
Entrance	£262.10
Bucking Bronco	£212.70
Cricket Bowling	£32.20
Cakes	£176.50
Teas and Coffees	£283.00
Bottle Stall	£360.00
Balloons In a Car	£24.00
Crockery Smashing	£64.00
Coconut Shy	£90.10
Aunt Sally	£34.70
Skittles	£76.00
BBQ	£600.00
Donations for Horse and Cart	£140.34
Sitting in cab of the tractor	£13.50
Donations	£640.00
<b>Total</b>	<b>£3919.95</b>

If any village organistations would like a donation please contact Alan Bloor or Hayley Watling.

## ILSLEY UNDER FIVES

The children are now on their summer holidays and we are all hoping for a little bit of sunshine this August... We will be running our sessions as per normal most weeks and we are also planning to meet at the local playgrounds a few times in August weather permitting of course. Please do get in touch for details.

Ilsey Under 5's is an established parent and carer run playgroup in partnership with Sure Start offering a great space to play in a friendly and safe environment. It is a great opportunity to get together with other local families and chat, play, go on picnics, trips, learn together or just have fun. Every week we provide a creative activity such as painting, play dough and sticking, and special themed events throughout the year.

We provide drinks and snacks for the children, and tea and coffee for the adults and every session ends with circle time sing song.

We meet on Wednesday mornings: 10:00 am – 11:30 am in West Ilsey Village Hall. Simply pop along and join us. New members are always welcome.

If you're planning a birthday party or any other event, remember that the Ilsey Under 5's small tables and chairs as well as our toys are available for hire throughout the year. All for a donation of £10. Please contact me for more details.

Angélique Ravion 01635 281 327

## ILSLEYS SCHOOL

Hello from everybody at The Ilseys Primary School. It is nearly the end of term at last. What a busy term this has been. The children and staff have been working extremely hard to finish the term with lots of wonderful activities. We went on a whole school trip to the Bluereef Aquarium in Southsea. It was a great day although we were not very lucky with the weather. The children saw some fantastic thunder and lightening storms happening across the channel too! We have gone musical mad here with a concert happening at St Mary's Church. Thank you to the vicar for letting us use the church. Mrs Pearce did a fantastic job with the choir who put on a lovely performance. There was also a special performance for the Autumn Group who were very impressed by the fabulous singing. They particularly enjoyed Josh Fielding playing his electric guitar. Sports Day is due to happen on the 12<sup>th</sup> July weather permitting and we have an end of year performance of Snow White. It hardly seems possible that another year has nearly been and gone. We would like to take this opportunity to wish you all a lovely summer and you will be hearing from us again in the autumn term. Kate House

## MOBILE LIBRARY

The mobile library will be in Fir Tree Paddock 2.10 to 2.40 pm on 9<sup>th</sup> and 30<sup>th</sup> August.

### **Teas with Giants!**

St Mary's Church  
Aldworth

EVERY WEDNESDAY  
(until 31<sup>st</sup> August)

**2.30 to 4.30**

#### **Enjoy Afternoon Tea!**

(Only £2 for tea & cake)

See the "Aldworth Giants" and 1000 year old  
Yew Tree.

Study our Millennium Tapestry.

Relax and enjoy TEA in our peaceful churchyard  
or in our historic church.

Please help us raise funds to improve  
St Mary's Church facilities.

**Details: David Sheppard: 578177**

Groups please forewarn so we have enough cake!

## **9<sup>th</sup> Birthday Fair**

**of Aldworth Saturday Market**

FREE slice of cake for everyone

**Saturday 10<sup>th</sup> September**

**9 a.m. to 1 p.m.**

Aldworth Village Hall & Rec.

***DOG AGILITY***

(Have a Go for £1)

Blewbury Brass Band

***Bouncy Castles***

**Children's Games**

Stationary Steam Engines

**Handcrafted Cards & Gifts**

Local Nursery Grown Plants

Local Fresh Flowers

Books

Homemade Cakes & Savouries

**Fresh Fruit & Vegetables**

**FAIRTRADE Foods**

Dragonfly Teas

Sweets & Treats

**REFRESHMENTS**

**Let us know if YOU would like a stall**

Contact: Kathy 01635 578090

## UPDATE FOR JULY

Here is the latest Downlands neighbourhood update from Police Officer PC 6127 Kirsten Goodfield.

The latest crime statistics can be found by visiting [www.police.uk](http://www.police.uk).



This website provides you with helpful information about crime and policing in your area. Enter your postcode, town, village or street into the search box, and get instant access to street-level crime maps and data, as well as details of the neighbourhood team and 'have your say events'. The latest figures available indicate that the level of crime and ASB in the area is average in comparison to the rest of the Thames Valley.

A new DVD and booklet 'Shutting the Gate on Rural Crime' has been produced. This is aimed at farmers and rural businesses to encourage greater precautions to protect property. This production has been led by Thames Valley Police, assisted by South East regional police forces and other organisations involved in helping to reduce rural crime. The DVD features an interview with a Bedfordshire farmer and National Farming Union (NFU) president, Peter Kendall.

The DVD and booklet feature sections on estate security, equipment security, counter terrorism, wildlife crime, animal crime, heritage crime and also include local police contacts and details of the Country watch scheme.

We know that we have some issues regarding rural crime, including plant theft, scrap metal theft and more recently fuel theft. These offences impact on the ability of farmers and rural communities to feel safe in their homes and workplaces. There are also links with serious organised crime, as some of the stolen machinery is worth many thousands of pounds. The DVD and booklet contain common-sense advice that, if taken, should significantly reduce both the opportunities for rural crime and rural crime itself. The theft of farm machinery is costly and has a major impact on livelihoods - farmers are frequently left without the tools of their trade and it is difficult for them to replace specialist equipment. The average modern tractor costs more than £60,000 and sometimes as much as £120,000. Last year in England and Wales, 1,975 tractors and other agricultural vehicles were stolen, costing insurance company NFU Mutual in excess of £10million. If you wish to get hold of the rural crime DVD and booklet please contact a member of the team.

**DOWNLAND PCSO** The DOWNLAND area is at this time without a specified PCSO. It is anticipated that the officer will be on area later in

the year after training and we will update everyone as soon as we have the date confirmed. Although without a specified DOWNLANDS PCSO the area is currently being covered by other officers from THATCHAM Police Station.

On Sunday the 5th of June 2011 PCSO's CRANSTONE and TAYLOR attended the East ILLSLEY Sheep Fair and spoke with members of our community offering an impromptu "Have Your Say" meeting with members of the public. A number of persons were given Crime Prevention advice.

Although a rain soaked event the Sheep Fair was well attended.

On Saturday the 11th of June 2011 PCSO's CRANSTONE and TAYLOR also attended LECKHAMPSTEAD village fete. The event was well attended and the weather much improved.

The officers were able to engage with the public and show their community support.

There also have been a number of reported Hare Coursing incidents in the Ilsley area. The police helicopter was deployed to assist and the suspect vehicle was found burned out.

**SPEEDING IN THE AREA.** Due to concerns of speeding, speed checks have been carried out in BRIGHT WALTON HOLT. No persons were found to be exceeding the designated speed limit.

Further speed checks will be carried out in areas of concern. People caught exceeding the speed limit will be dealt with robustly. If applicable they will be offered the opportunity for an educational course to learn about the potential effects of their actions. Otherwise they will receive a Fixed Penalty Notice for a fine and penalty points.

Please keep your speed down, it is there for a purpose.

**UNDERAGE DRINKING.** Also I would like to remind the parents of our teenage residents of their responsibilities in terms of preventing their children from obtaining alcohol kept at the house.

Make sure you know what you have in stock and keep an eye out to make sure none has gone missing. Underage drinking is a priority for the team to address as it inevitably leads to anti-social behaviour, criminal damage and occasionally violence. If we find anyone under 18 with alcohol we will seize and destroy it. We will also be contacting parents to make them aware of their children's behaviour and if necessary asking them to be collected and taken home. The Policing and Crime Act 2009 makes it an offence for a person under 18 to be found in possession of alcohol three times within a twelve month period. This means that a person can be sent to court and receive a punishment of up to a £500 fine. This is not a route we want to go down if avoidable, we would much rather the situation never arose, but please make your children aware that this is a tool

at our disposal which will be utilised if there are ongoing issues with individuals.

If you live, work or own a business in the area and would like to meet with your neighbourhood policing team please contact us via the 24-hour Police Enquiry Centre on 0845 8 505 505. Alternatively you can visit the Thames Valley Police website to view information on your neighbourhood team.

#### **COMMUNITY MESSAGING**

Community Messaging is a free service which provides information to subscribers about crime and police activity in their area via phone or email. It also includes information on what we and our partner services are doing to bring offenders to justice or combat anti-social behaviour. More information can be obtained via our website, and you can sign up by following this link: <http://www.tvpcommunitymessaging.org/rmwebportal/startup.aspx>

**CONTACT US** If you want any advice or would like to contact the neighbourhood team you can call us on the police non emergency number 0845 8 505505 but if your call is an emergency then dial 999. You can also contact us via email:

[DownlandsNHPT@thamesvalley.pnn.police.uk](mailto:DownlandsNHPT@thamesvalley.pnn.police.uk) - please note this email address cannot be used to contact Thames Valley Police to report crimes or for any urgent matters. If you have information about crime or Anti Social Behaviour in your area but you do not want to speak to the police, please call the Crimestoppers charity on 0800 555111. To view information on your neighbourhood team you can visit the force website at: [www.thamesvalley.police.uk](http://www.thamesvalley.police.uk)

#### **The Royal British Legion (RBL) - news from your local branch July 2011 - Compton, Ilsleys & Norreys Branch**

The Officers and members of your local branch of the Royal British Legion (RBL) thank everyone who visited our stand at the East Ilsley Sheep Fair and played in the egg throwing competition! We made £60 for the Poppy Appeal and two prospective members kindly introduced themselves. Next year we hope to be at the Compton Fete.

May we refresh our notice of three events yet to be held this year – please note that there have been some changes - to which everyone is warmly welcomed. You do not have to be a member of the RBL to attend any of these events; a) **Branch Annual lunch on Friday 30 Sep 11 (please note new date)**

The event, after last year's success, will again be held at the Compton Swan 1215hrs for 1300hrs. We are delighted to announce that Richard Benyon MP, Member of Parliament for Newbury and Minister for the Natural Environment and

Fisheries has agreed to attend and speak briefly after lunch about this government's commitment to the Military Covenant. The cost will be £15 per head for a two course meal including table wine and coffee. This is an ideal opportunity to meet your MP

**b) Remembrance Sunday Parade and Service 13 Nov 11**

This year this event will be held in Compton with the parade forming up at the Compton Swan at 1030hrs to march to the service to be held at Compton Parish Church at 1100hrs

**c) Royal British Legion 90<sup>th</sup> birthday Wine Tasting and Talk Fri 25 Nov 11 in aid of the Poppy Appeal**

We are delighted to announce that Mr Julian Jeffs, wine author and member of our branch, has agreed to stage a wine tasting and talk to be held at the Compton Swan at 7pm on Friday 25 Nov 11 during which you will be able to taste and hear comments upon eight wines on the hostelry's wine list. At the event, for which there will be an entry fee of £10, you will be able to order wines of your choosing at discounted prices. What an opportunity to prepare for Christmas and support the Poppy Appeal!

If you would like to attend the Annual Branch Lunch or the Wine Tasting & Talk, please contact one of either

David Norbury 01635 578531

[davidnorbury@btinternet.com](mailto:davidnorbury@btinternet.com)

Alex Lister 01635 281343

[alexplister@btinternet.com](mailto:alexplister@btinternet.com)

Finally, may we renew our call for new members? You do not have to be an old stager or have been a serving member of our armed forces but just be a believer in the RBL cause – young applicants are particularly welcome and the annual membership fee presently stands at just £11 rising to £12 next year. If you are interested in joining please use the points of contact above

We look forward to hearing from you

## WHO TO CONTACT

### VILLAGE HALL

Sue Simmons - Bookings 281460 9 am - 3 pm, Monday to Friday)  
or [suesimmons@toucansurf.com](mailto:suesimmons@toucansurf.com)  
Fred Carter - [fred\\_kathcarter@btinternet.com](mailto:fred_kathcarter@btinternet.com) 281621  
Rates: £7.50/hr Villagers £15/hr Non Villagers

### PRESCRIPTIONS

Prescriptions can be collected from Liz Elliott at 2 Morland Close, between 10 am and 6 pm, Monday to Friday 281997. Should you wish to collect outside the above hours, please telephone to ask if it's convenient. Prescription requests can be put through the door any time. The surgery bus makes deliveries on Tuesday and Friday mornings.

### CHURCHWARDENS

Alexandra Axtell 281306      Ian Fewtrell-Smith 281625

### TENNIS COURT

Membership: Liz Dray - [lizdray@btinternet.com](mailto:lizdray@btinternet.com) 281688  
Play without joining - to book: Amanda Knight - 281609

### PARISH COUNCIL

Clerk:  
Alison Banks - [Alison@poplars.org.uk](mailto:Alison@poplars.org.uk) 281705  
Chairman:  
Sean Ryan - [Sean.ryan@sunday-times.co.uk](mailto:Sean.ryan@sunday-times.co.uk) 281336  
Jo Scriven - [Jo.clifton@tynan-darcy.com](mailto:Jo.clifton@tynan-darcy.com) 281405  
Dries Hagen - [dries.hagen@healthpml.com](mailto:dries.hagen@healthpml.com) 281855  
Alan Bloor - [Alanpeter.bloor@virgin.net](mailto:Alanpeter.bloor@virgin.net) 281341  
John Mountford - [jgmountford@btinternet.com](mailto:jgmountford@btinternet.com) 281703



### DOWNLAND VOLUNTEER GROUP

Community car scheme  
Mon – Fri 10am – 12 noon  
01635 578394

### FOUNTAIN PLUMBING

Bathrooms – Kitchens – Tiling

### TONY ELLIOTT

Qualified Plumber

07780 994297  
01635 281997

2 Morland Close,  
West Ilsley, Newbury,  
RG20 7AN

A Friendly, Professional service at affordable prices.  
For all those little jobs that just need doing!

Roger Stowell

### Window cleaning

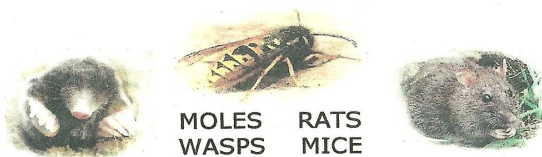
gutter clearance and general odd jobs

**Telephone 01869 600628**

**PESTCO**

ROBERT EDWARDS

WWW.PESTCO.BIZ



MOLES RATS  
WASPS MICE  
COCKROACHES  
BIRDS  
FLIES FOXES  
SQUIRRELS ANTS

RESIDENTIAL, AGRICULTURAL AND  
COMMERCIAL WORK UNDERTAKEN.

MOB:07796615818  
01488 670028  
PESTCO@HOTMAIL.CO.UK

**Domestic Electrical Installation**

Building regulation Part P Compliant  
installation/inspection/testing/fault finding  
and certification

Portable Appliance Testing @ 110/240 VAC

Contact Keith Pentecost

Tel: 01635-281389 (East Ilsley)

Mobile: 07985-797333

www.klp-electrical.co.uk

**Rachel Chandler BSc (Hons)**

**McTimoney Chiropractor (GCC reg)**

**Back, Neck and Shoulder Pain, Muscular  
Aches and Tension, Pain, Discomfort and  
Stiffness in Joints** are just some of the

conditions that can benefit from the gentle  
and effective McTimoney treatment which is  
suitable for all ages.

Health insurance accepted.

**Practices at Farnborough and the Wantage  
Natural Therapy Centre.**

**Phone Rachel on 07 87 94 75 557**

**Email: [rachelbchandler@hotmail.com](mailto:rachelbchandler@hotmail.com)**



**West Ilsley Mixed Doubles Tennis Tournament**  
**Bank Holiday Monday 29<sup>th</sup> August, 2011. Start time 2pm.**

Open to all members of West Ilsley Tennis Club

Please reply as soon as possible and no later than Saturday 20th August, to Alison by mail or drop these details to her.

Name: \_\_\_\_\_

Address: \_\_\_\_\_

Tel no: \_\_\_\_\_

Email: \_\_\_\_\_

Partner's Name: \_\_\_\_\_

£10.00 per person for entry

If you don't have a partner, let me know and I will see if I can put a pair together.